

Example on an EoC system

For further information
and updated manuals go to

triaux.com/support

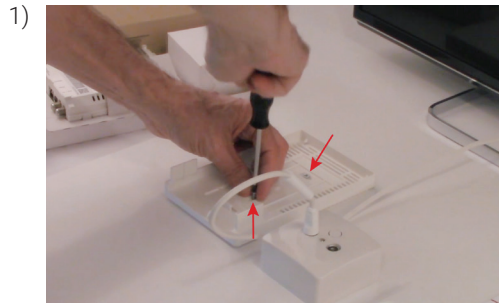


Quick Guide

Endpoint - WiFi/EoC

Model		Item no.
EP, WiFi/EoC, AC		383200
Version	Date	EN
A	12/2017	

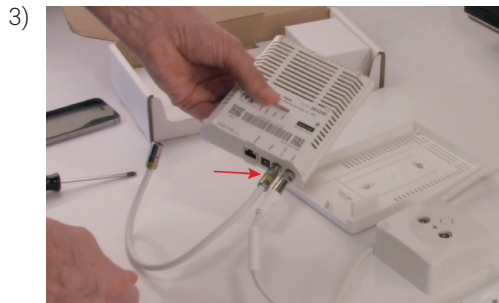
How to install EoC Endpoint in the installation



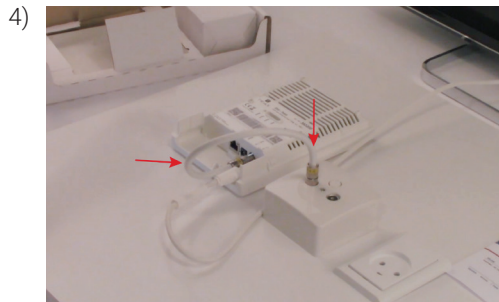
Mount the backplate by use of 2 screws



Mount an F/IEC adapter on the output, if required or make a new flylead with F-con and IEC-male

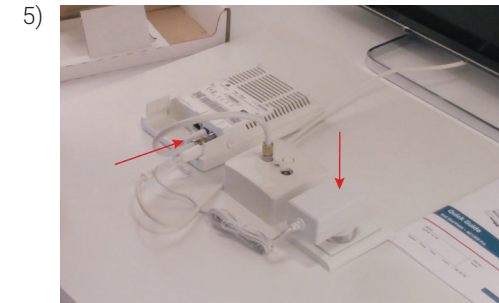


Mount a connection cable (F/IEC female) in the Endpoint input



Plug-in the cable in the TV connector on the wall outlet

How to install EoC Endpoint in the installation

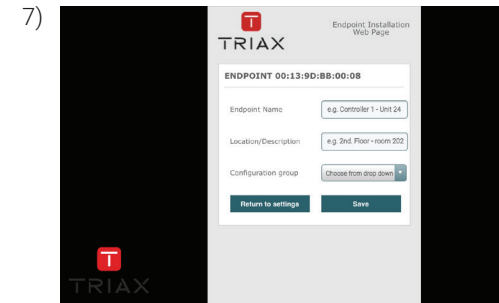


Plug the power adapter into the wall socket and the Endpoint

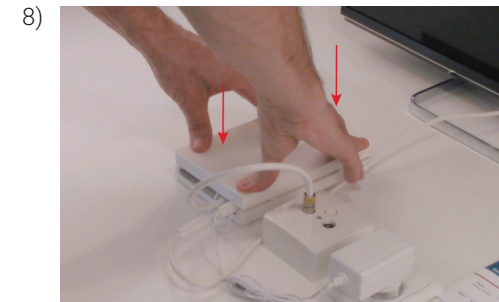


Log on to the WiFi SSID called TriaxSetup_XXXX (the XXXX is a text specific to your system).

Scan the setup code on your mobile using a QR code scanner, or connect your laptop to the TriaxSetup_XXX SSID and type in: <http://setup.eoc/endpoint/aa.bb.cc.dd:ee.ff> (mac-address of the endpoint you are configuring) in your browser.



Follow the on-screen steps in the GUI > Click SAVE



Mount the cover to finish the installation