

# Easy Start Guide

This section describes [Easy Start] for WJ-NU101K Series, WJ-NU201K Series, WJ-NU300K Series, WJ-NU301K Series.

The minimum settings required to operate the recorder, such as the date & time, camera registration, recording, can be configured on the setup menu - the "Quick setup" menu - "Easy Start".

First, configure the minimum settings on "Easy Start", and to configure more advanced settings, go to each setup page.

## Available settings on "Easy Start"

- Date & time of the recorder
  - Camera registration
  - Order change of the registered camera numbers
  - Recording frame rate, image quality Smart coding (GOP control) and audio
- \* Other settings will remain default or will be conformed to the camera settings.
- \* To apply 25, 50 or 60 ips for the recording frame rate, configure on the advanced recording setup (for each camera) on the "Recording setup" tab under "REC & event" of "Basic setup", but not on Easy Start.
- \* To reset the time, do not use "Easy Start", and go to "Basic setup" menu - "Date/Language" page.

## Important:

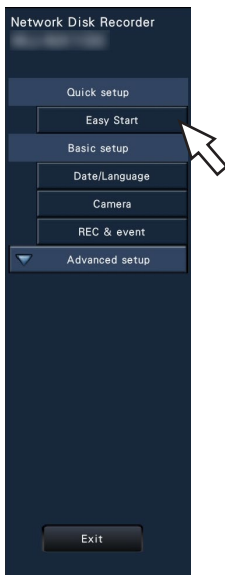
- Only our company and Panasonic cameras compatible with the recorder can be registered. Refer to our support website for compatible cameras.
- If you are using a non-Panasonic camera with an ONVIF connection, it is not possible to start operation just with Easy Start. Set up the date & time, a static IP address, the user name/password, etc. on the camera side in advance, or register the camera with the recorder by detecting the camera or changing the registration information from [Basic setup] - [Camera] - [Camera registration].

The descriptions and screens in this manual are based on WJ-NU300K Series as an example.

## Step 1

Click the [Easy Start] button on the top screen of the setup menu.

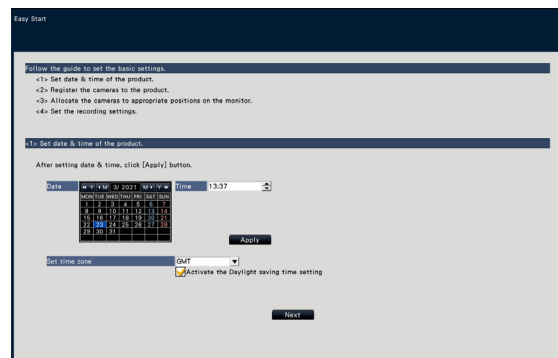
Refer to "Basic operations" (Page 7) for how to display the setup menu.



→ The setup menu for the date & time will be displayed.

## Step 2

Set the date & time.



### [Date]

Set the current date. Select the year and month using the buttons of the calendar and click the date.

**[<<Y]/[Y>>] button:** Selects the previous or next year.

**[<M]/[M>] button:** Selects the previous or next month.

### [Time]

Set the current time.

## Step 3

Click the [Apply] button after setting the date & time.

→ The second will be set to "00".

### [Set time zone]

Select your time zone.

GMT-12:00 - GMT+13:00

**Default:** GMT

Marking the checkbox for [Activate the Daylight saving time setting] will active daylight saving time.

## Step 4

### Click the [Next] button.

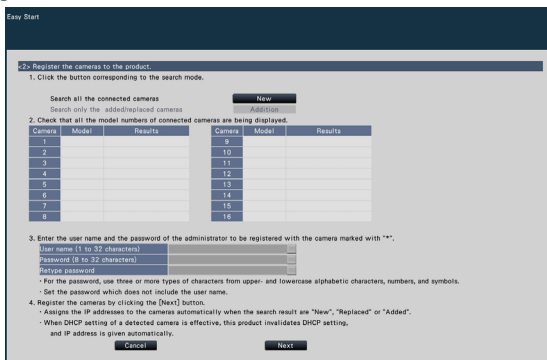
→ The camera registration window opens.

#### Note:

- To use the existing IP address of the connected cameras, refer to "Detect cameras for registration [Detect cameras]" (☰ Operating Instructions (PDF)) instead of "Easy Start".
- Before the settings, register the cameras into the network.

## Step 5

### Register the cameras connected to the recorder.



### [New] button

Usually use it with no camera registered in the recorder.

Detects all the connected cameras.

The models and results of the detected cameras will be displayed.

Make sure that the model numbers of all the connected cameras are being displayed.

### [Addition] button

Usually use it when there are added or replaced cameras during operation.

Detects only the added or replaced cameras.

The models and results of the detected cameras will be displayed.

Make sure that the model numbers of all the added or replaced cameras are being displayed.

#### Important:

- When there are cameras in use, the system can overwrite the registered information and assign new IP addresses to all connected cameras (including cameras currently in use) by clicking the [New] button.
- Cameras newly added after the operation start will be registered in the default settings. To conform the settings to those of the registered cameras, perform the settings for the added cameras.
- For the video encoder (WJ-GXE500), only the camera connected to CH1 will be detected. The channels CH2 to CH4 are needed to be registered from the setup menu.

#### Note:

- The camera number detected at Easy Start does not match the camera port number (P1 - P4 or P8, P16) on the rear panel of the recorder. Follow STEP 8 to replace the camera number if you want to match the camera number and the port number.

### [Model]

When Panasonic cameras are used, the model numbers will be displayed.

### [Results]

New: Displayed when the camera is newly connected to the recorder.

Replaced: Displayed when the camera has been replaced by another one.

Added: Displayed when the camera connection is added to the recorder.

Registered: Displayed when the camera has already been registered.

Lost: Displayed when the registered camera is not detected.

Blank: No camera is detected.

\*: Administrator not registered

#### Note:

- If "Lost" is displayed or the column is left blank, check if the power of the camera is turned on, and make sure that cables are properly connected.

## Step 6

Enter a user name and a password to register for a camera with "\*" in the results.

## Step 7

### Click the [Next] button.

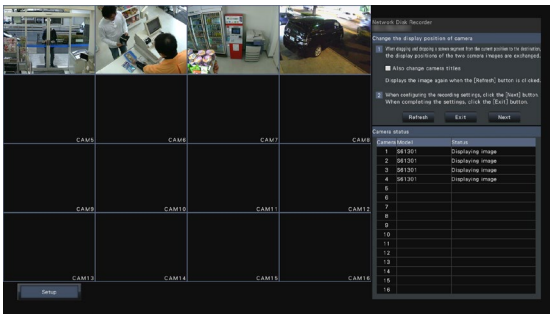
→ IP address will be given to the cameras newly connected, replaced or added, and the images from the camera will be displayed on the operational screen.

#### Note:

- For the security enhancement, changing of the IP address of the camera will become impossible when 20 minutes have passed after the power is turned on. Perform the camera detection within 20 minutes, or turn off the power of the camera and turn it on again if more than 20 minutes has passed. Refer to the operating instructions of the camera for further information.
- When "On" is selected for the "DHCP" setting of the detected cameras, the recorder will forcibly change the setting to "Off" to give the IP addresses automatically.
- When the [Cancel] button is clicked, the top screen of "Easy Start" (the menu to set the date & time) without applying the camera detection result will be displayed.

## Step 8

When you wish to change the registered camera numbers, it is possible to change the order of the camera numbers.



To interchange camera numbers, drag the camera image to be moved with the mouse and drop on the desired position. If the camera titles are to be interchanged as well, mark the "Also change camera titles" checkbox.

### [Camera status]

The model numbers and statuses of each camera will be displayed in a list.

**Displaying image:** Displays the images from the camera using the IP address that is newly registered or that has already been registered.

**Changing IP address:** Images are being obtained from the camera whose IP address has been changed.

**Undetectable:** Cannot obtain images from the camera.

**Authentication error:** Failed in the authentication to display images from the camera.

### Important:

- If "Undetectable" is displayed, check the camera connections, and retry the camera registration.
- If "Authentication error" is displayed, initialize the camera and retry the camera registration by referring to the operating instruction of the camera.
- If the registered camera is not correctly detected or if you wish to change the camera settings, change the registered information on the "Basic setup" menu - the "Camera" page - the "Camera registration" tab.  
(PDF) Operating Instructions (PDF)

### [Refresh] button

Obtain the latest camera image after interchanging cameras.

### [Exit] button

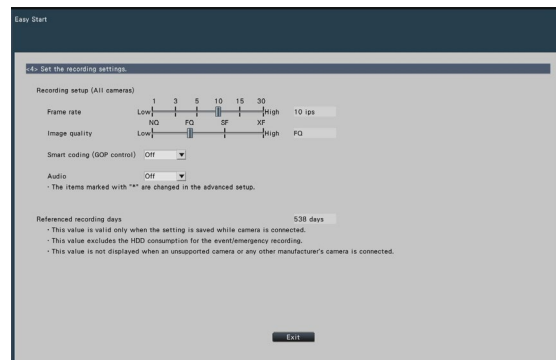
Exits the setup menu and returns to the top screen of the setup menu.

### [Next] button

Proceeds to the settings for recording.

## Step 9

Perform the settings for recording. If the settings are performed on "Easy Start", the settings will be applied to all the cameras.



### [Frame rate]

Select the recording frame rate.

1 ips / 3 ips / 5 ips / 10 ips / 15 ips / 30 ips

**Default:** 10 ips

### Important:

- To apply 60 ips, configure on "[Advanced >]" of the "Recording setup (All cameras)" on the "Recording setup" tab under "REC & event" of "Basic setup".
- For a camera whose compression method is [MJPEG], "10 ips / 15 ips / 30 ips" cannot be selected.
- If a camera whose compression method is [MJPEG] is included, [MJPEG] camera is set to "5 ips" even if "10 ips / 15 ips / 30 ips" is set by slider bar of frame rate setting. You can confirm the current setting value with [Advanced >] in Recording setup (All cameras).

### [Image quality]

Selects the image quality of recorded images.

NQ (Normal): Standard quality

FQ (Fine): High quality

SF (Super Fine): Super fine quality

XF (Extra Fine): Extra fine quality

**Default:** FQ

### Important:

- For a camera whose compression method is [MJPEG], "XF" cannot be set.
- If a camera whose compression method is [MJPEG] is included, [MJPEG] camera is set to "SF" even if "XF" is set by slider bar of image quality setting. You can confirm the current setting value with [Advanced >] in Recording setup (All cameras).

### [Smart coding (GOP control)]

Select when you use the smart coding (GOP control) function of the camera.

On(Advanced): Uses the smart coding.

Off: Does not use the smart coding.

**Default:** Off

Refer to the operating instructions of the camera for this function.

### [Audio]

Select whether or not to record audio together with images.

On(AAC-LC): Audio will be recorded. (AAC-LC format)

Off: Audio will not be recorded.

**Default:** Off

### [Referenced recording days]

Calculates and displays the total number of days for which recording on the hard disk drives is available.

---

#### **Note:**

- The referenced recording days will be calculated based on the assumption that recording is started on Monday.
  - The HDD consumption for the event recording will be excluded.
  - If a camera manufactured by other than Panasonic is used, the value of "Referenced recording days" will not be displayed.
  - When configured to perform recording in high resolution and high quality, recording may sometimes not be performed at the specified rate.  
When there may be possibility to fail recording at the specified rate while using only Panasonic cameras, the confirmation window will be displayed.
- 

#### **Step 10**

**Click the [Exit] button.**

→ Saves the settings and returns to the top screen of the setup menu.

When the camera image is displayed on the main monitor or the web browser on the PC and can be recorded or played, the recorder is ready for operation.

