

11ac 2200Mbps Wave2 Ceiling Wireless AP

Model: G-AP-PRO-48



Description:

This is an 11ac Wi-Fi standard Qualcomm Chipset high power industrial Ceiling Wireless Access Point support MU-MIMO, Wave2.0 and Seamless Roaming.

Combined 2200Mbps Wi-Fi speed over 3 radios: 2.4GHz(400Mbps)+5GHz(900Mbps)+5GHz(900Mbps), equipped Gigabit WAN & LAN ports, fast Ethernet data rate make more than 200 end users can access into G-AP-PRO-48 with faster Ethernet, make them to enjoy seamless HD movies, streaming, online gaming, wireless security and other bandwidth-intensive tasks, widely be used in school, hospital, hotel, office, shipping mall...

High Power for more range and stable signal

Designed in Power Amplifier on PCB board, the power can be 300mW high power, 3dBi MIMO high gain antenna, together with Ceiling mount, greatly increase the wireless range and supply the stable Wi-Fi signal for users.

Metal Case, perfect heat dissipation to extend the working life

The bottom shell with metal material, improved the heat dissipation function, work as normal in -30° C to 70° C, can be installed in almost environment, and extend the device working life.

MU-MIMO, Wave2.0 Technology

Comply with Wave2.0 Technology, it adopt 256QAM modulation, support MU-MIMO (Multi-User Multiple-Input Multiple-Output), 8 Spatial Steams, greatly to improved the communication efficiency.



Beamforming, DFS, 5G Prior, Seamless Roaming, OFDM support

It supports many functions like Beamforming, DFS(Dynamic Frequency Selection), Airtime Fairness, Band Steering (5G Prior), 11kvr Seamless Roaming, OFDM(Orthogonal Frequency Division Multiplexing), RF Power adjustable to improve the performance and Wi-Fi stability.

Power over Ethernet and DC Power available

It has integrated IEEE802.3at Power over Ethernet (PoE), for easy installation and lower cost. What's more, it support DC input if need, So it can be installed in areas where power outlets are not readily available, eliminating the mess of altering existing network infrastructure.

Access Controller System & Cloud Management System

With Access Control System, plug and play, zero configure the AP's IP address, ESSID, Channel, Password, upgrade firmware, backup and restore....

What's more, the AC controller with local authentication function, easy to do advertisement and captive portal authentication like Member/WeChat/SMS login.

Besides that, administrator can remote manage the AC controller or wireless AP at any place/time, simple and cost save in maintenance.

Main Features:

- Comply with IEEE 802.11ac/b/g/n, tri-band, 2200Mbps Data Rate
- With IPQ4019 CPU, 4 core, greatly improved the data processing performance.
- 1*10/100/1000Mbps WAN Port, 1*10/100/1000Mbps LAN Port, faster Ethernet.
- With Skyworks power amplifier and FEM, 300mW high power, build in 3dBi MIMO antenna, stronger signal strength, more wireless coverage, 32M Flash, 512M DDR3 RAM, more user, more stable
- Support active IEEE 802.3at 48V PoE standard
- Support SSID broadcasting, Multi SSID up to 12 (4 SSID in 2.4GHz, 8 SSID in 5GHz)
- Support Gateway (PPPOE, static IP, dynamic IP) , Wireless AP, Repeater, WISP multiple operation mode
- Comply with IEEE 802.3az standard, RF power adjustment and frequency analyzer for better application in different environment

Product Spec.:

Hardware:	
Chipset	Qualcomm IPQ4019+QCA9886+QCA8075
Standard	802.11ac/b/g/n, MIMO technology
DDR3	512MB
Flash	32MB
2.4G Frequency	2.4GHz - 2.484GHz
2.4G Wi-Fi standard	802.11b/g/n

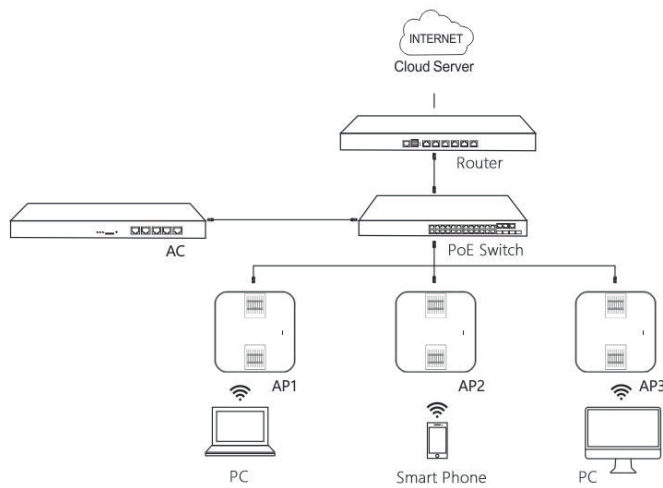


High Power Ceiling Wireless AP

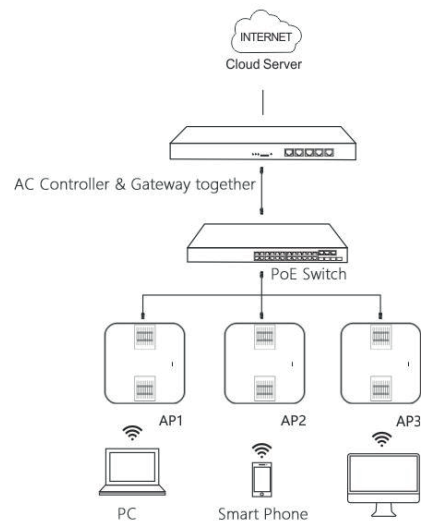
5.8G Frequency	IPQ4019: 5.150GHz~5320GHz; QCA9886: 5.500GHz!5.825GHz
5.8G Wi-Fi Standard	802.11 a/n/ac
Interface	1 * 10/100 /1000Mbps RJ45 WAN Port
	1 * 10/100 / 1000Mbps RJ45 LAN Port
	1 * Reset button, press 10 seconds to revert to default setting
Antenna	Build in 3dBi MIMO Antenna
Data Rate	2200Mbps
End Users	150+
RF Power	≤ 25dBm
DC	12V----2A
PoE	48V (IEEE 802.3at)
LED light	Sys, WAN, LAN
Surge	Different Mode: ± 2KV, Common Mode: ± 4KV
ESD	± 4KV
Max Power Consumption	≤ 24W
Size	198mm * 198mm * 41.02mm
Weight	Net weight: 786.7g
Firmware Features:	
Operation mode	Wireless AP: Plug and Play. Gateway: Dynamic IP/Static IP/PPPoE Wi-Fi Repeater: Bridge exist wireless signal, then extend to more range. WISP: For WLAN ISP, bridge ISP's exist wireless signal, then dial-up to obtain Ethernet and extend more wireless range.
Wireless Functions	Multiple SSID functions: 2.4GHz: 4; 5.8GHz: 8
	Support SSID hidden
	Support seamless roaming, 802.11kvr standard.
	Support 5G Prior for a faster Ethernet.
	Wireless Security: Open, WPA, WPA2PSK_TKIPAES, WAP2_EAP, 802.1x
	Support MAC filter
	Support Wi-Fi time on/off to save energy
	Support client isolation to improve the wireless stability
	Support RF power adjustable, adjust the RF power based on environment.
Support user quantity limited, Max 64 users to access each band.	
Networking Function	VLAN settings
	Cloud access support in gateway mode
Device Management	Back-up the configuration
	Restore the configuration
	Reset to factory default
	Reboot the device: including time reboot or reboot immediately
	Admin management password modify

	Firmware upgrade
	System log
	Support firmware GUI web management, AC controller management, remote management and cloud management
Protocols	IPv4
Others:	
Package Contents	2200Mbps Dual Band wireless access point Ethernet Cable Quick Installation Guide Installation Accessory
Environment	Operating Temperature: -20~55 °C Limit working temperature: -30~70 °C Storage Temperature: -40~70 °C Humidity: 5%~95% non-condensing

Working Diagram

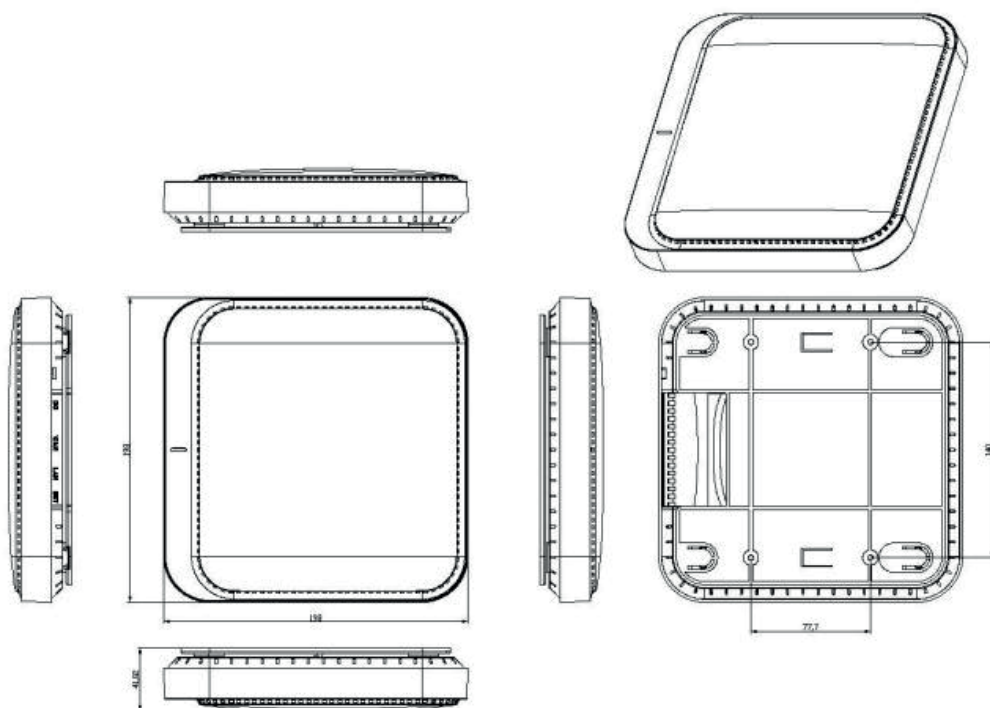


Connection Diagram 1

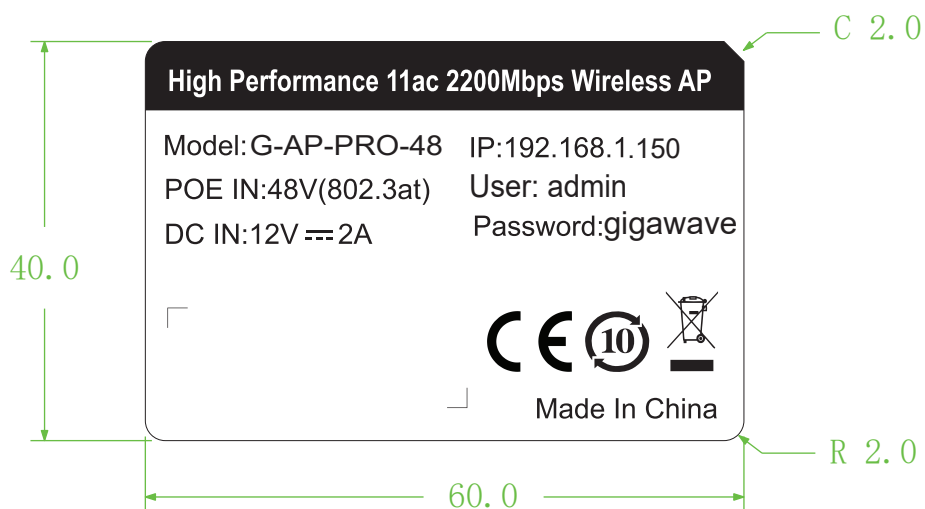


Connection Diagram 2

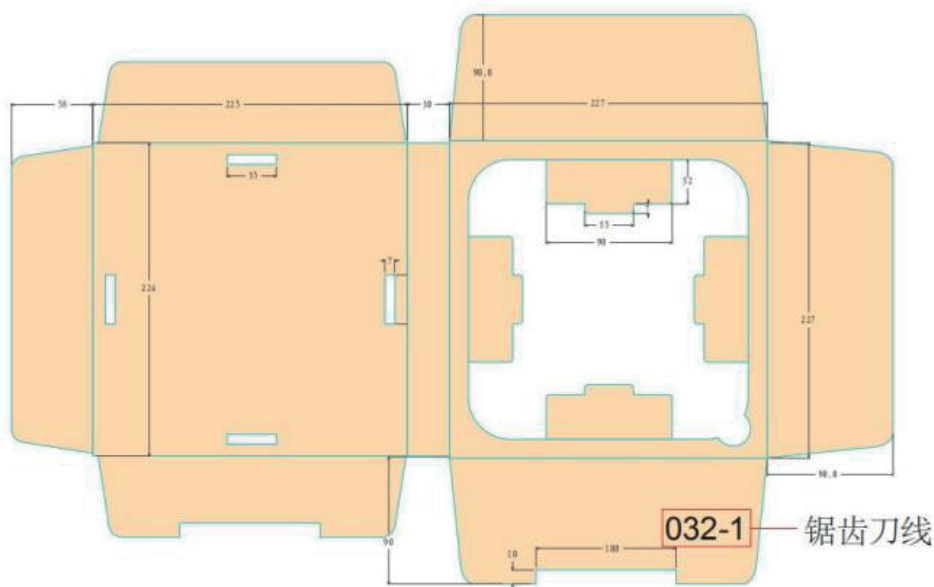
Product Picture:



Product Sticker:



Packing Box:



Carton box:

规格: 51.5x50.5x49.5CM
 材料: 外箱 K=K 加强芯 面纸180g; 坑纸120g; 中格纸:70g; 底纸:160g
 型号:XD6300/XD6700(水滴)/XD4200/XD6800/A770(盾牌) 品牌:华通(20套/箱)

