

BioEntry W2

Outdoor IP Fingerprint Device



Suprema BioEntry W2 is a rugged fingerprint access control device featuring Suprema's next generation biometric technology and security platform. BioEntry W2 provides class-leading performance and security by featuring Suprema's latest fingerprint algorithm coupled by powerful quad-core CPU and LFD(live finger detection) technology. The device also provides added flexibility in system design by featuring multi card reading with dual-frequency RFID technology. Packed in a rugged IP67/IK09 housing with sleek metallic finish, BioEntry W2 is a perfect access control solution for tough environment and outdoor installation.

BioEntry W2

Outdoor IP Fingerprint Device

Features



Best-in-class Performance

- Latest Suprema algorithm
- 1.2GHz quad-core CPU



Improved Accuracy & Security

- New advanced Live Finger Detection(LFD) technique
- High-precision OP5 optical sensor



Expanded Capacity

- Max. 500k users/1 million text logs
- Large memory: 2GB Flash + 256 MB RAM



Rugged Structure

- IK09 impact protection
- IP67 ingress protection
- Ideal for outdoor installation



Multi RFID Card Reading

- LF(125kHz), HF(13.56MHz) dual-band
- Reads all card types that HID multiCLASS supports (EM/HID Prox/MIFARE/iCLASS/DESFire/FeliCa/NFC)

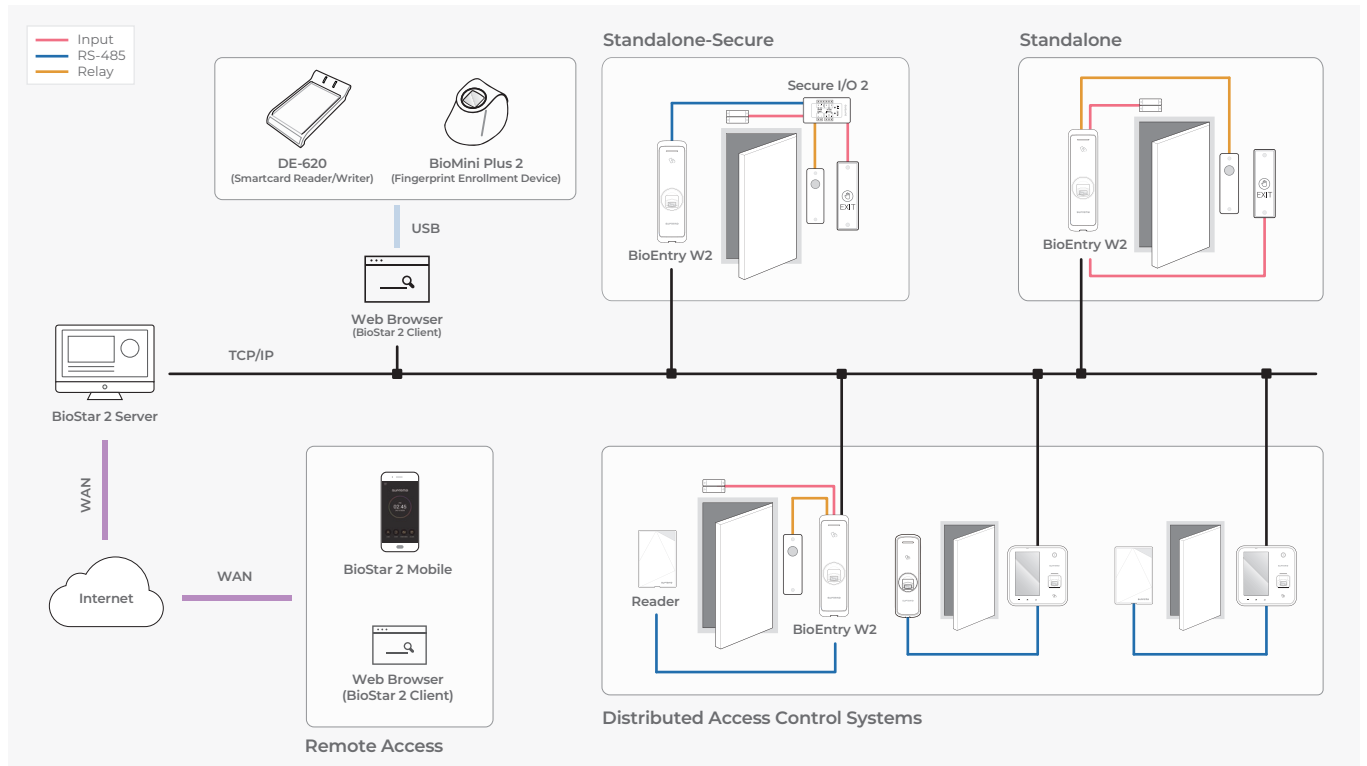
Specifications

BEW2-ODP, BEW2-OAP, BEW2-OHP do not support BLE

Model Name	BEW2-OHPB	BEW2-ODPB	BEW2-OAPB
RF Option	125kHz EM, HID Prox & 13.56MHz MIFARE, MIFARE Plus, DESFire EV1/EV2*, FeliCa, NFC, 2.4GHz BLE	125kHz EM & 13.56MHz MIFARE, MIFARE Plus, DESFire EV1/EV2*, FeliCa, NFC, 2.4GHz BLE	125kHz EM, HID Prox & 13.56MHz MIFARE, MIFARE Plus, DESFire EV1/EV2*, FeliCa, iCLASS SE/SR/Seos, NFC, 2.4GHz BLE
Biometric	Fingerprint		
Sensor Type	Optical Sensor (OP5)		
Template	SUPREMA / ISO 19794-2 / ANSI 378		
Extractor / Matcher	MINEX certified and compliant		
LFD	Supported		
CPU	1.2 GHz Quad Core		
Memory	2GB Flash + 256 MB RAM		
Max. User	500,000 (1:1), 100,000(1:N)		
Max. Template	1,000,000(1:1), 200,000(1:N), [Two templates per finger]		
Max. Logs	1,000,000(text)		
LED	Multi-Color		
Sound	Multi-tone Buzzer		
Ethernet	10/100 Mbps, auto MDI/MDI-X		
RS-485	1ch host or slave (selectable), OSDP V2.1.6		
Wiegand	1ch input or output (selectable)		
TTL	2ch input		
Relay	1 Relay		
PoE	Supported (IEEE 802.3af compliant)		
Ingress Protection	IP67		
Impact Protection	IK09		
Tamper	Supported		
Power	Voltage: DC 12V Current: Max. 600 mA		
Operating Temperature	-20°C ~ 50°C		
Operating Humidity	0% ~ 80%, non-condensing		
Dimensions (WxHxD, mm)	50 x 172 x 43.5		
Certificates	CE, FCC, KC, RoHS, REACH, WEEE, UL 294 * UL 294 is applied to only BEW2-OAP model.		

* DESFire EV2 cards are supported by having backward compatibility of DESFire EV1 cards. CSN and smart card functions are compatible with BioEntry W2.

System Configurations



Suprema Inc.

17F Parkview Tower, 248, Jeongjail-ro, Bundang-gu, Seongnam-si, Gyeonggi-do, 13554, Republic of Korea
 T +82 31 783 4502 E sales_sys@supremainc.com www.supremainc.com



For more information about Suprema's global branch offices, visit the webpage below by scanning the QR code.
<https://www.supremainc.com/en/about/contact-us.asp>