

# SMART + ENVIRO Waterproof Protective Cover

The Smart+Enviro is a tough polycarbonate hinged waterproof protective cover that can easily be installed over a range of call points, emergency switches and other devices to provide protection from vandalism, accidental damage or misuse. It has been designed and engineered to provide protection for devices exposed to hostile environments.

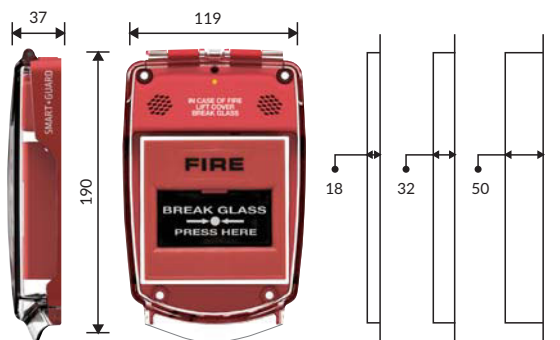
The Smart+Enviro can also be fitted with an integral battery powered alarm, that when lifted emits an ear piercing 90dB alarm, warning the user that the device is for emergency use only and should not be tampered with.

Applications include off-shore, the food and beverage industry, swimming pools and leisure centres, underground installations and any area where exposure to the environment is likely to cause damage to control equipment or switching devices.

## Features

- Smart design and engineering resulting in an aesthetically pleasing but tough retrofitable protective cover
- Designed for ease of installation, the Smart+Enviro can be fitted and protecting devices in minutes
- An optional battery powered 90dB alarm can be fitted increasing the security and protection of the device it is covering
- The alarmed Smart+Enviro has a 3 year battery life and incorporates a low battery warning LED
- A break seal can also be fitted to increase the visible deterrence against misuse
- Available in 5 colours: red, green, yellow, blue and white
- Three surface mounting spacers are available 18mm, 32mm (standard) and 50mm

## Installation



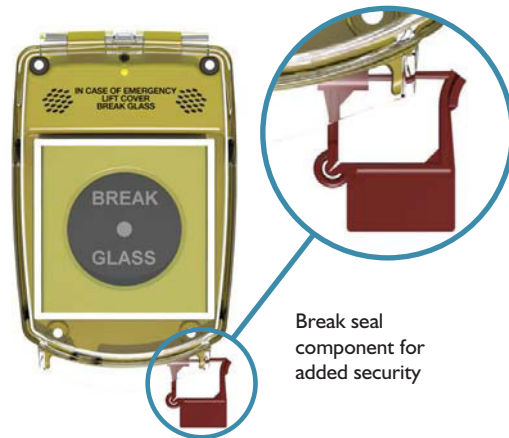
Dimensions (mm)

## Colours



## Part Numbers

- SGE-F-x: Waterproof, No Sounder, Flush Mounting
  - SGE-S-x: Waterproof, No Sounder, Surface Mounting
  - SGE-FS-x: Waterproof, Integral Sounder, Flush Mounting
  - SGE-SS-x: Waterproof, Integral Sounder, Surface Mounting
  - SG-SMS18: Surface Mounting Spacer 18mm Deep
  - SG-SMS32: Surface Mounting Spacer 32mm Deep  
(Supplied as standard with surface mount models)
  - SG-SMS50: Surface Mounting Spacer 50mm Deep
- x = R for Red, Y for Yellow, G for Green, B for Blue, W for White.



Break seal component for added security



Optional threaded insert provides various weatherproof installation options

In partnership with  SIGMA FIRE & SECURITY



Shaping Alarm Technology