



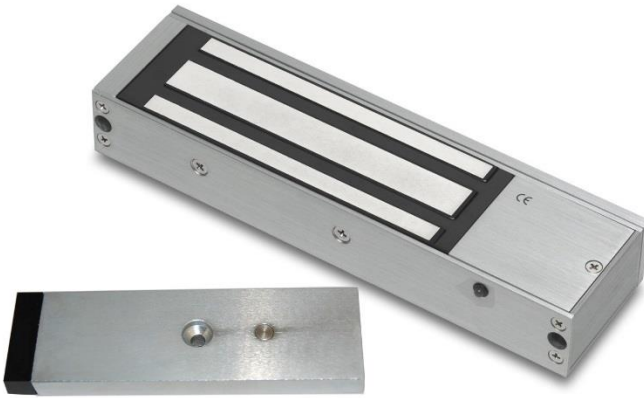
Security Trade Products

Tel: 01763 848209

www.securitytradeproducts.co.uk

## STP-EM20DS

### Single standard maglock, monitored, door status monitoring



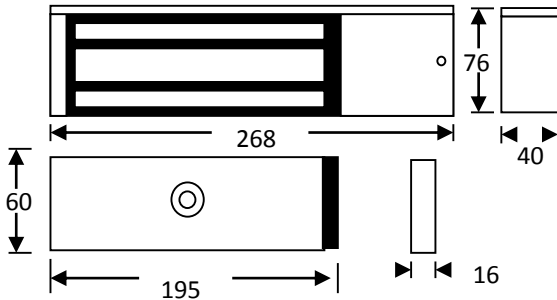
Standard single monitored magnetic lock, designed for indoor applications where 545kg holding force is required. Monitoring provides LED lock status indication and relay contacts for signalling. This model includes door status monitoring contacts to monitor the door position (open or closed).

#### Features

- MOV provides spike and surge protection
- Fail-safe operation (power to lock)
- Anti-residual magnetism protection
- Top-plate, armature-plate and fixings included
- Dual voltage 12Vdc or 24Vdc (selectable)
- Surface mount
- Silver anodised aluminium finish
- Lock monitoring
- Door status monitoring

#### Technical Information

- Holding force: up to 545kg (1200lb)
- Current draw = 500mA @ 12Vdc / 250mA @ 24Vdc
- Voltage tolerance: +/- 15%
- Operating temp: -10°C to +55°C
- Humidity: 0-95% non-condensating
- Weight: 4.8kg approx.
- Red/Green LED indicator
- Relay: COM/NO/NC (1A@24Vdc)
- Reed switch door contact



#### Related Products

STP-EM500L



STP-PSU3A-12(B)



STP-EM500ABP



STP-EM-AH10-1



Enquiries: sales@securitytradeproducts.co.uk