

Miniature wireless shock sensor
with *Ricochet*[®] mesh technology



You can't evade what you can't see

The Micro Shock-W is designed to detect and analyse a forcible shock and provide early warning of an attempted intrusion before a break-in occurs, ensuring the safety of people and property inside. The ultra miniature design provides discrete yet powerful protection for all windows, doors and walls.

Outstanding features include:

- Small size - 57mm x 27.5mm x 8.2mm
- Superior accelerometer technology
- Three colour options
- LED assisted setup procedure
- 3 Year typical battery life
- EN50131-2-8 Grade 2 compliant



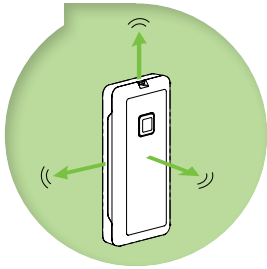
Texecom products are designed
and manufactured in the UK

www.texe.com
Sales: +44 (0)1706 212524

Small in size. Packed with features.

Superior accelerometer technology

Sophisticated accelerometer technology provides a much higher level of accuracy for detecting and communicating vibrations in comparison to piezoelectric technology used in most other products.



Install with ease

Simple, fast and easy to setup, the Micro Shock-W is installed with a single button. With intuitive LED indications taking you step-by-step through the installation and commissioning process, trips back to the control panel are no longer required.

Install with confidence

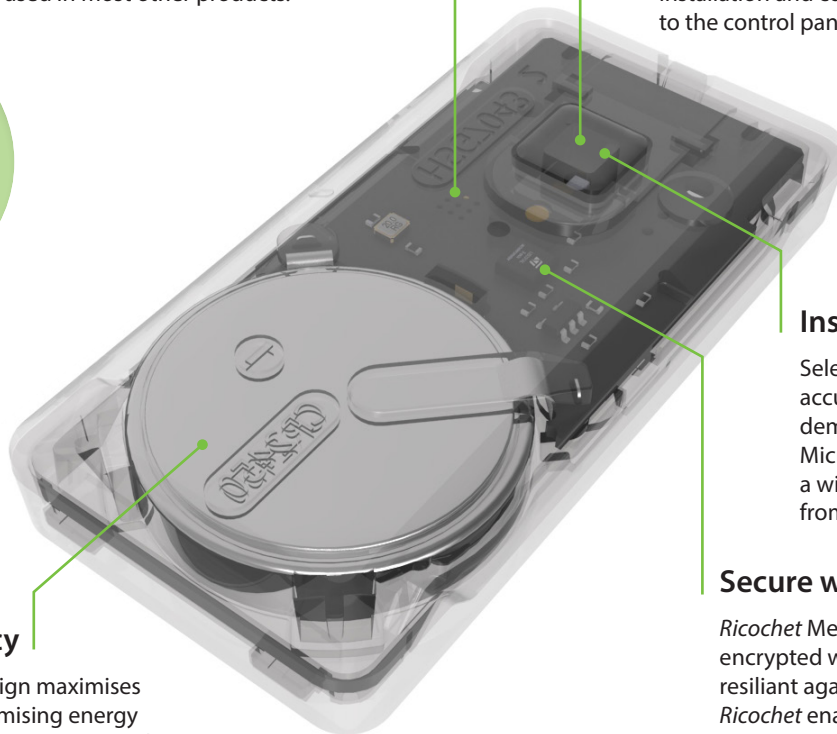
Select from 5 sensitivity settings for accurate detection in even the most demanding environments; the Micro Shock-W can be installed on a wide range of materials ranging from window frames to concrete.

Secure wireless

Ricochet Mesh Technology provides secure, encrypted wireless communications that are resilient against blocked transmission paths. *Ricochet* enabled wireless devices receive and repeat messages from other devices. The size, scalability and range of the entire system are extended, as wireless signalling is no longer limited by point-to-point communications.

Effortless efficiency

Intelligent electronic design maximises performance whilst minimising energy consumption. Achieving a 3-year typical battery life from a single coin-cell battery (CR2450) the Micro Shock-W provides longer service intervals and minimal disruption.



Standards & Specifications

Alarm System	EN50131-2-8:2016, EN50131-5-3:2017, EN50131-1:2006+A2:2017, PD6662:2017, Grade 2 Class II
Product Type & Frequency Band	GHCA1000 : 868.2 – 868.4MHz GHCA3000 : 433.3 – 433.7MHz
Receiver	Category 1, Class 2
Receiver LBT	Listen Before Talk
Transmitter Duty Cycle	868MHz<1%
Max RF power	10mW
Low Voltage Signal	2.5V (Compensated according to temperature)
Operating Voltage	3V
Maximum Current	12mA
Quiescent Current	14uA
Relative Humidity	0 – 95% non-condensing

Dimensions & Weight

